

Project Name: _____

Fixture Type: _____

Date: _____



3" ELIUM™ Gear Adjustable Canless Downlights

IC Rated, up to 950 lumens. 120-277V, Triac, ELV, 0-10V, Dali 2, Lutron, EldoLed. New Construction & Remodel. Round, Square, Flanged and Flangeless.

3" ELIUM TRIMS



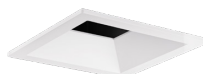
Round Bevel



Round Pinhole



Round Wall Wash



Square Bevel



Square Pinhole



Square Wall Wash



Flangeless Round
Bevel



Flangeless Round
Pinhole



Flangeless Round
Wall Wash



Flangeless Square
Bevel



Flangeless Square
Pinhole



Flangeless Square
Wall Wash

FEATURES	SPECIFICATIONS
<ul style="list-style-type: none"> 3 Part System: Frame, Module, & Trim UL Listed for direct contact with insulation Title 24 JA8-2022-E Shallow height requires less than 4" height above the ceiling Lockable gear adjustment up to 40° center axis tilt and 359° rotation, adjusted with 1/8" Allen Key from below the ceiling Patented LED Module with in field changeable optic Standard Dimming to 1% with 0-10V, Triac and ELV dimmers. Optional 0.1% dimming Compatible with ceilings up to 2" thick (2" thick ceilings may limit tilt) Flanged and flangeless options Precision single piece die-cast trims 50,000 hours lifespan L70 	WATTAGE: 10.5W
	LUMENS: 950 lm
	VOLTAGE: 120-277V
	COLOR TEMP: 2700K, 3000K, 3500K, 4000K, Sunset Dim to Warm, Human Centric Dim to Warm
	DIMMABLE: 0-10V, Triac, ELV (1%), 0-10V (0.1%), Dali2 (0.1%), LUTRON HI-LUME (0.1%)
	BEAM ANGLE: 15°, 24°, 36°, 50°
	UL LISTED: Damp & Wet location options
	CRI: 95+

3" ELIUM™ 3-PART SYSTEM: FRAME, MODULE & TRIM



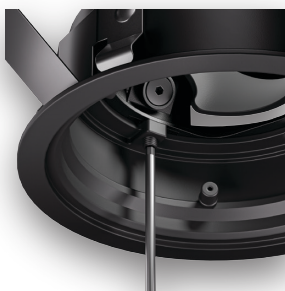
LOCKABLE HOT AIMING GEAR ADJUSTMENT FROM BELOW

Adjustability



Hot Aiming from below
the ceiling using
a 1/8" Allen Key

Rotation Lock



359° Lockable Rotation
with 1/8" Allen Key*

Lockable Gear Adjustment



Easy access for quick
and effortless adjustments
from below the ceiling



* 1/8" Allen Key (**LU332ALLEN**) ordered separately

1. Specify frame part number		FRAME					Example: LUAE37RDX09	
ELIUM	SIZE	STYLE	DRIVER	LUMENS	IC	OPTIONAL EM		
LUAE	<input type="text"/>	<input type="text"/>	<input type="text"/>	<input type="text"/>	<input type="text"/>	<input type="text"/>		
LUAE	37 3"	RD Round (New Construction) SQ Square (New Construction)	X 120-277V, 0-10V, Triac/ELV 1% ED EldoLed, 0-10V 0.1% AL EldoLed, Dali 2 0.1% LN Lutron, Hi-Lume	09 950 lm (10.5W)	IC IC Rated	(Blank) No EM EM5 25W EM, 90 min		
REM		Remodel/Retrofit						

2. Specify module part number		MODULE		Example: LUAE2130D-S	
ELIUM	TYPE	COLOR TEMPERATURE		BEAM	
LUAE	<input type="text"/>	<input type="text"/>		<input type="text"/>	
LUAE	21 CREE Chip, CRI 95+	27D 2700K 30D 3000K 35D 3500K 40D 4000K		-S 15° ² -N 24° -F 36° -W 50°	
19 Bridgelux Chip, Dim to Warm, 3000K to 1800K		SD Sunset Dim to Warm ¹			
19 LTF Chip, Dim to Warm, 4000K to 2200K		HC Human Centric Dim to Warm ²			
		¹ Automatically dims from 3000K to 1800K ² Automatically dims from 4000K to 2200K		² Not for SD option	

SECONDARY MODULE OPTICS*				
L45	L57	L51	L49	L58
Black Louver	White Louver	CCT Reducer	Frosted Lens	Solite Lens

*Module Fits up to 4 secondary optics

3. Specify trim part number		TRIM					Example: LU37RD10T72W	
ELIUM	SIZE	SHAPE	STYLE	TRIM	LENS	FINISH		
LU	<input type="text"/>	<input type="text"/>	<input type="text"/>	<input type="text"/>	<input type="text"/>	<input type="text"/>		
LU	37 3"	RD Round SQ Square	10 Bevel 27 Pinhole 33 Wall Wash ¹	T Flanged ² LS Flangeless ^{3,4}	(Blank) Open, No Lens ^{5,7} 72 Clear Lens ^{6,7} 83 Difused Lens ^{6,7} 94 Linear Lens ^{6,8}	W All White BB All Black		
		¹ Requires Linear Lens (94 lens option)		² For ceiling thickness up to 2" ³ For ceiling thickness up to 3.5" ⁴ Requires Spackle Frame, ordered Separately	⁵ Damp Location ⁶ Wet Location ⁷ Not available for Wall Wash Trim ⁸ For Wall Wash trim only			

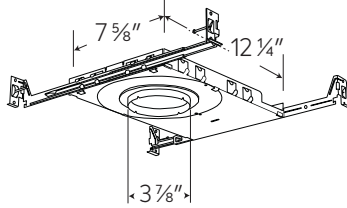
ACCESSORIES		
ROUND SPACKLE FRAME	SQUARE SPACKLE FRAME	ALLEN KEY
LU37RDSF	LU37SQSF	LU332ALLEN

PRODUCTS

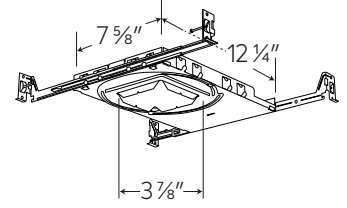
Frames



3" FRAME Round



3" FRAME Square

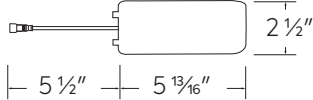
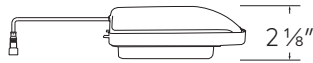


25° collar rotation
for square alignment

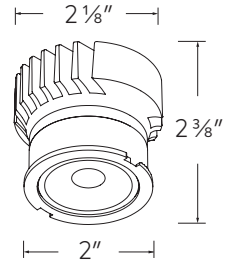
Remodel/Retrofit



ELIUM Remodel/Retrofit

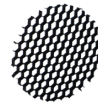


ELIUM Canless Module



Module

Accessories



Black Louver
L45



White Louver
L57



CCT Reducer
L51



Frosted Lens
L49



Solite Lens
L58



Lenses
LUP15D (15°)
LUP24D (24°)
LUP36D (36°)
LUP50D (50°)

Trims



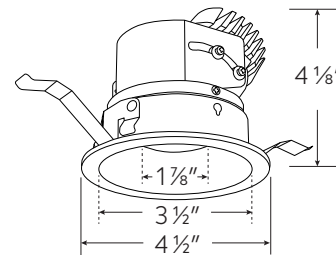
Round Bevel



White



Black



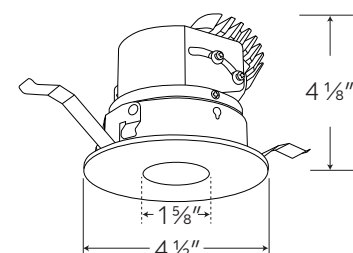
Round Pinhole



White



Black



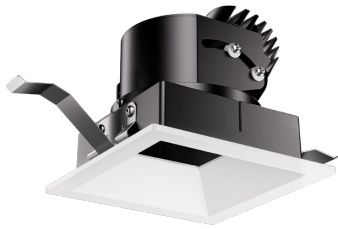
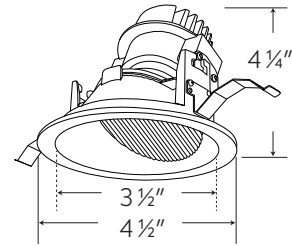


Round Wall Wash



White

Black

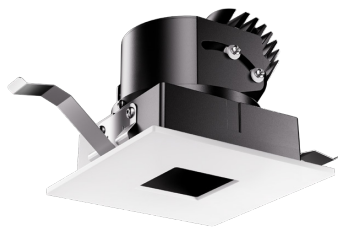
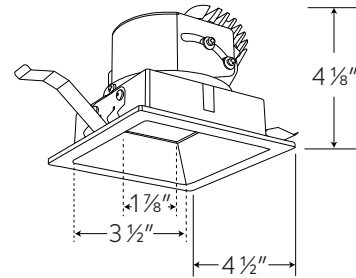


Square Bevel



White

Black

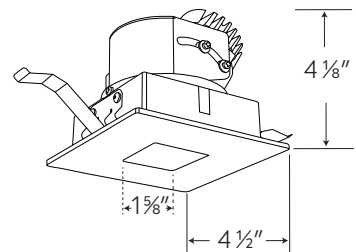


Square Pinhole



White

Black

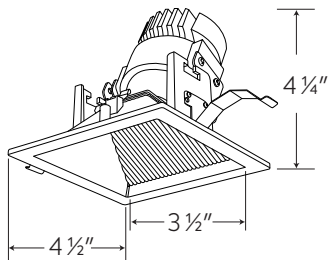


Square Wall Wash



White

Black

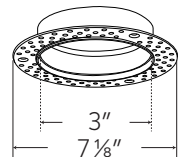
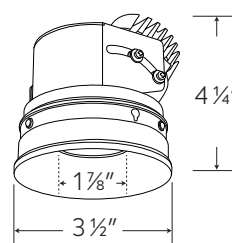


Flangeless Round Bevel



White

Black



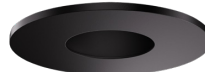
Spackle Frame
Ordered Separately



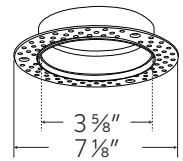
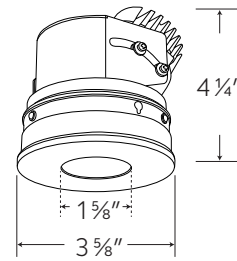
Flangeless Round Pinhole



White



Black



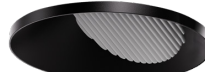
Spackle Frame
Ordered Separately



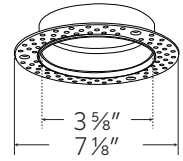
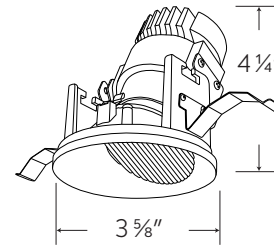
Flangeless Round Wall Wash



White



Black



Spackle Frame
Ordered Separately



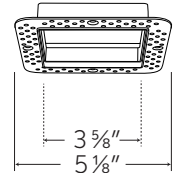
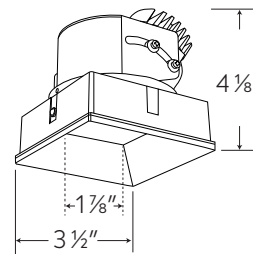
Flangeless Square Bevel



White



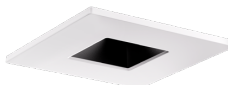
Black



Spackle Frame
Ordered Separately



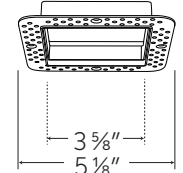
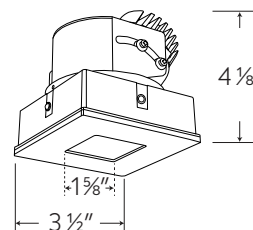
Flangeless Square Pinhole



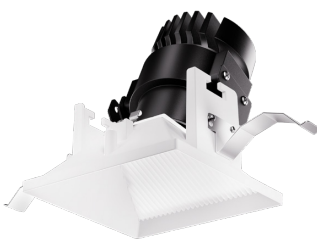
White



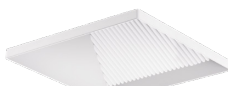
Black



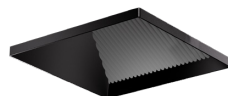
Spackle Frame
Ordered Separately



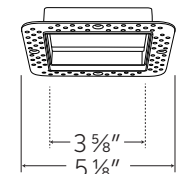
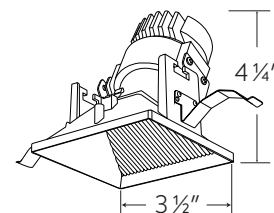
Flangeless Square Wall Wash



White



Black



Spackle Frame
Ordered Separately

TECHNICAL SPECIFICATIONS

The ELIUM Downlight is a modular, high-performance recessed lighting system designed for versatility and ease of installation. The system consists of three key components: Housing, Module, and Trim Mechanism. The module securely twists onto the trim mechanism and connects to the housing via a quick-connect system. Both the module and driver are fully serviceable from below the ceiling.

HOUSING:

Designed for ceiling plenums with 2 x 6 joists or taller.

- High-strength hanger bars can be easily nailed to joists.
- Compatible with T-grid and drop ceiling applications.
- Adjustable hanger bars extend from 7.5" to 24". (7.5" length is after breaking off the extra sections on the hanger bars)
- Accessible driver mounted on the frame for easy servicing.
- Rotatable square collar ensures precise square alignment.
- Knockouts for easy wiring:
 - Two 3/4" knockouts
 - Seven 1/2" trade-size conduit knockouts
 - One 3/8" knockout
 - RCT (Romex cable trap)

EMERGENCY OPTIONS:

- 90-minute emergency battery backup with remote test switch.
- 25W emergency backup requires access from above.

OPTICS:

- Precision-engineered PIR optics available in 15°, 24°, 36° and 50° beam spreads.
- Field-changeable secondary lenses available—no accessory holder required. Module can hold up to 4 secondary lenses.

LED TECHNOLOGY:

CREE COB LED for superior performance.

- 95+ CRI for exceptionally accurate color rendering.
- 50,000-hour L70 lifespan based on LM80 test standards.
- Advanced thermal management with integrated heat sink.
- Instant-on to full brightness with no visible LED pixilation.

SUNSET DIMMING & HUMAN CENTRIC:

- Dim-to-warm LED technology: Color temperature automatically warms as it dims.
- Sunset dimming: 3000K at full brightness, dimming smoothly down to 1800K.
- Sunset Dimming: To order, select an item with "Sunset SD" in the Color Temperature (CCT) attribute.
- Human Centric: 4000K at full brightness, dimming smoothly down to 2200K.
- Human Centric: To order, select an item with "HC" in the Color Temperature (CCT) attribute.

ADJUSTABILITY:

- Adjustable from below the ceiling while keeping the light centered with the trim opening.
- 35° tilt adjustment, set using a 1/8" Allen key with an Automatic locking mechanism ensures secure positioning.
- Lockable 359° rotation for precise aiming.

MODULE - LUMEN MULTIPLIER

CCT	MULTIPLIER	BEAM ANGLE	MULTIPLIER
2700K	0.96	15°	0.84
3000K	1	24°	0.89
3500K	1.05	36°	1
4000K	1.085	50°	1.065
SD	0.80		
HC	0.80		

DIMMER COMPATIBILITY CHART

FOR REFERENCE ONLY

Testing conducted by ELIUM Lighting is not a substitute for and does not imply certification by an independent laboratory or any other standards certification. Refer to manufacturer specifications for more detailed information on product certifications and standards. Consult the dimmer manufacturer prior to installation to ensure compatibility.

MANUFACTURER	PRODUCT	PART NUMBER	DIMMED LIGHT OUTPUT RANGE
120V – Triac/ELV Dimmers for LU37RD Series, LU37SQ Series, LU45RD Series & LU45SQ Series			
Leviton	120V AC 60Hz, 300W Electronic Low Voltage, 400 Volt Amp, Single Pole, 3-Way	IPE04	1% – 100%
	120V AC 60Hz, 300W CFL or 600W Incandescent, 400 Volt Amp, Single Pole, 3-Way	6673-10W	1% – 100%
	120V AC, 600W Incandescent with LED Locator, Single Pole, 3-Way	VP106	1% – 100%
	120V AC 60Hz, 500W Incandescent with LED Level Indicator, Single Pole, 3-Way	6161	1% – 100%
	120V AC, 150W LED/CFL or 600W Incandescent, Single Pole, 3-Way	6674	1% – 100%
Lutron	120V AC, 150W LED/CFL or 600W Incandescent/Halogen, Single Pole, 3-Way	RRD-6CL	1% – 100%
	120V AC 60Hz, 150W LED/CFL/Incandescent/Halogen, Single Pole, 3-Way	DVCL-153P	1% – 100%
	120V 60Hz, 150W LED/CFL or 600W Incandescent/Halogen, Single Pole, 3-Way	TGCL-153P	1% – 100%
	120V AC 60Hz, 300W Electronic Low Voltage, 3-Way, Commercial/Residential Application	DVELV-303P	1% – 100%
	120V, 600W Incandescent/Halogen, Single Pole, Residential Indoor Application	TG-600P	1% – 100%
	120V, 1000W Incandescent or 600W Magnetic Low Voltage, Single Pole, 3-Way	CT103P	1% – 100%
	120V AC 60Hz, 600W Electronic Low Voltage, Single Pole/Multi-Location	MAELV600	1% – 100%
	120V AC 60Hz, 500W Electronic Low Voltage, Single Pole/Multi-Location	FAELV500	1% – 100%
	120V AC 60Hz, 600W Incandescent/Halogen, Single Pole, Slide-to-Off Dimmer	S-600P	1% – 100%
	120V AC 60Hz, 150W LED/CFL or 600W Incandescent/Halogen, Single Pole, 3-Way	SCL-153P	1% – 100%
	Caséta® Wireless Dimmer	PD-6WCL	1% – 100%
	120V AC 60Hz, Low Voltage Load Type, 150W Single Pole	DVLV-600P	5% – 100%
	120V AC, 60Hz, 600W Incandescent/Halogen, Single Pole, 3-Way, Residential and Commercial Application	DV-603P	1% – 100%
	120V AC, 50/60Hz, 150W LED/CFL, 600W Incandescent/Halogen, Single Pole, 3-Way, Indoor Application	MA-PRO	1% – 100%
	120V AC 60Hz, 150W LED/CFL or 600W Incandescent/Halogen, Single Pole, 3-Way	MACL-153M	1% – 100%

***NOTE: Refer to dimmer manufacturer's documentation for installation instructions and circuit details**

Disclaimer: Minimum and maximum loads for LEDs and CFLs are given in number of lamps and may vary depending on the lamp being used. Testing conducted by ELCO Lighting is not a substitute for and does not imply certification by an independent laboratory or any other standards certification. Refer to manufacturer specifications for more detailed information on product certifications and standards.

Integrating our lighting with your Smart Home System is a breeze. Simply check your Smart Home system for compatible smart switches and cross reference that with our Dimming Compatibility Chart. Once the switches are integrated with your Smart Home system your lights will be ready to go.



DIMMER COMPATIBILITY CHART

FOR REFERENCE ONLY

Testing conducted by ELIUM Lighting is not a substitute for and does not imply certification by an independent laboratory or any other standards certification. Refer to manufacturer specifications for more detailed information on product certifications and standards. Consult the dimmer manufacturer prior to installation to ensure compatibility.

MANUFACTURER	PRODUCT	PART NUMBER	DIMMED LIGHT OUTPUT RANGE
120V – Triac/ELV Dimmers for LU37RD Series, LU37SQ Series, LU45RD Series & LU45SQ Series			
Eaton	120V AC, 300W LED/CFL or 600W Incandescent/MLV/Halogen, Single Pole, 3-Way	TAL06P1-C1	1% – 100%
Cooper	120V AC 60Hz, 300W LED/CFL or 600W Incandescent/Halogen, Single Pole, 3-Way	SLC03P / DAL06P	1% – 100%
	120V AC 60Hz, 300W LED/CFL or 600W Incandescent, Single Pole, 3-Way, Residential	DLC03P	1% – 100%
	120V AC 60Hz, 600W Incandescent/Halogen, Single Pole, 3-Way	RI061-VW-K2	1% – 100%
	120V AC 60Hz, 300W LED/CFL/ Incandescent/Halogen, Single Pole, 3-Way	AAL06A-C2	1% – 100%
Lightolier	120V, 260W Incandescent/Halogen, Single Pole, 3-Way	ZP260QEW	1% – 100%
0-10V Type Dimmers - 120/277V for LU37RD Series, LU37SQ Series, LU45RD Series & LU45SQ Series			
Lutron	120/277V AC, 0-10V LED/CFL Ballast, Single Pole, 3-Way	NFTV	1% – 100%
	120/277V AC, 0-10V, Single Pole, 3-Way, Commercial and Residential, Indoor Application	DVSTV	1% – 100%
	120/277V AC 50/60Hz, 0-10V LED/CFL Ballast, Single Pole, 3-Way, Indoor Application	DVTV	1% – 100%
Leviton	120/277V AC 60Hz, 0-10V LED/CFL Ballast, Single Pole, 3-Way	IP710-DL	1% – 100%

***NOTE: Refer to dimmer manufacturer's documentation for installation instructions and circuit details**

Disclaimer: Minimum and maximum loads for LEDs and CFLs are given in number of lamps and may vary depending on the lamp being used. Testing conducted by ELCO Lighting is not a substitute for and does not imply certification by an independent laboratory or any other standards certification. Refer to manufacturer specifications for more detailed information on product certifications and standards.

Integrating our lighting with your Smart Home System is a breeze. Simply check your Smart Home system for compatible smart switches and cross reference that with our Dimming Compatibility Chart. Once the switches are integrated with your Smart Home system your lights will be ready to go.

